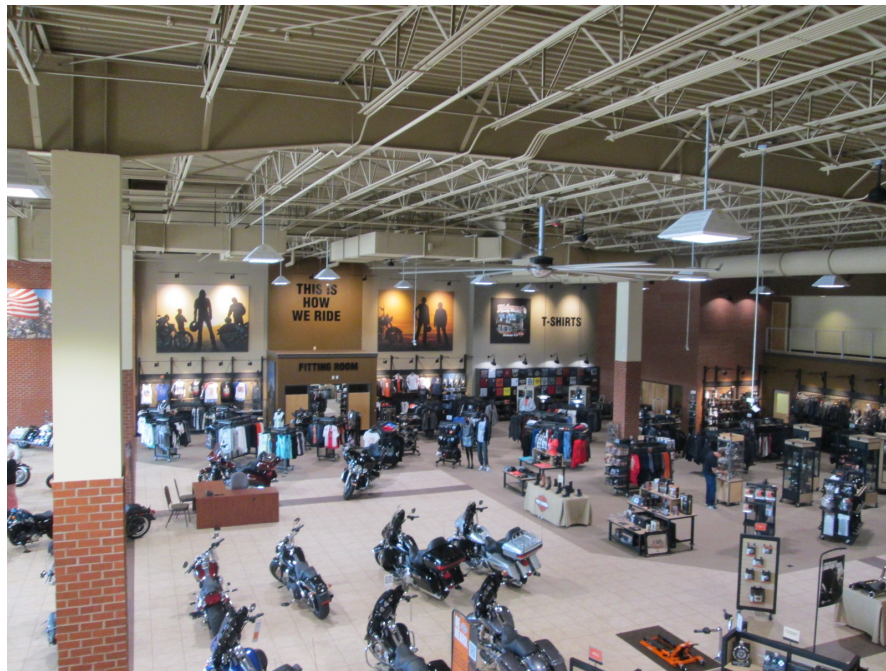


SRP PROJECT of the MONTH

RICHMOND HARLEY DAVIDSON

Simmons, Rockecharlie, & Prince recently completed the design for the new Richmond Harley Davidson Showroom and Service Facility located in Ashland, Virginia alongside Interstate 95. The Project contains Administration Offices, a Retail Store, A Bike Shop, a Service Facility, an Outdoor Stage, and Community Rooms for Corporate Parties and Events. Multiple Gas Fired Packaged Rooftop Units serve the Building in addition to a 100% Package Energy Recovery unit that serves the Service bays. An 18 foot diameter Ceiling Fan circulates air in the Retail space. The electric service is 1600 amp, 208 volt, 3 phase. Highly efficient LED and fluorescent lighting are utilized throughout the building and on the site.



SIMMONS ROCKECHARLIE & PRINCE INC.
8416 Glazebrook Ave.
Richmond, Virginia 23228

Phone: 804-262-7323
Fax: 804-262-0021
WWW.SRPENG.COM



**Consulting Mechanical &
Electrical Engineers**